



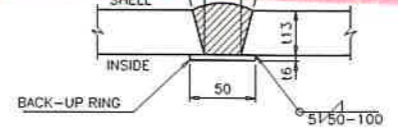
PART NO.	PART NAME	MATERIAL	WORK QTY/BUNDLE	SPARE	WEIGHT (kg)	REMARKS
1	ANCHOR B/2N/W	SS400	4			M20xL480
2	SETTING B/2N/2W	SS400	2			M20xL90

** NOTE **

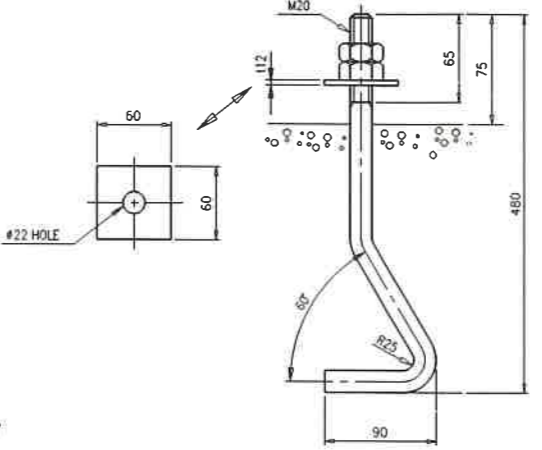
NO.	CONDITION	FR (MAX.)	MR (MAX.)
1	OPERATING WEIGHT OF H/EX.	7920	7920
2	OPERATING WEIGHT OF H/EX. + WIND OR SEISMIC LOAD	9100	9100
3	HYDRO. TEST WEIGHT OF H/EX.	11320	11320

UNIT [Kg]

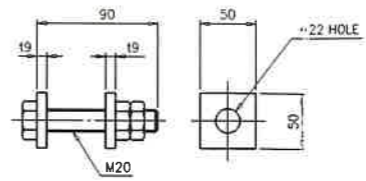
FINAL



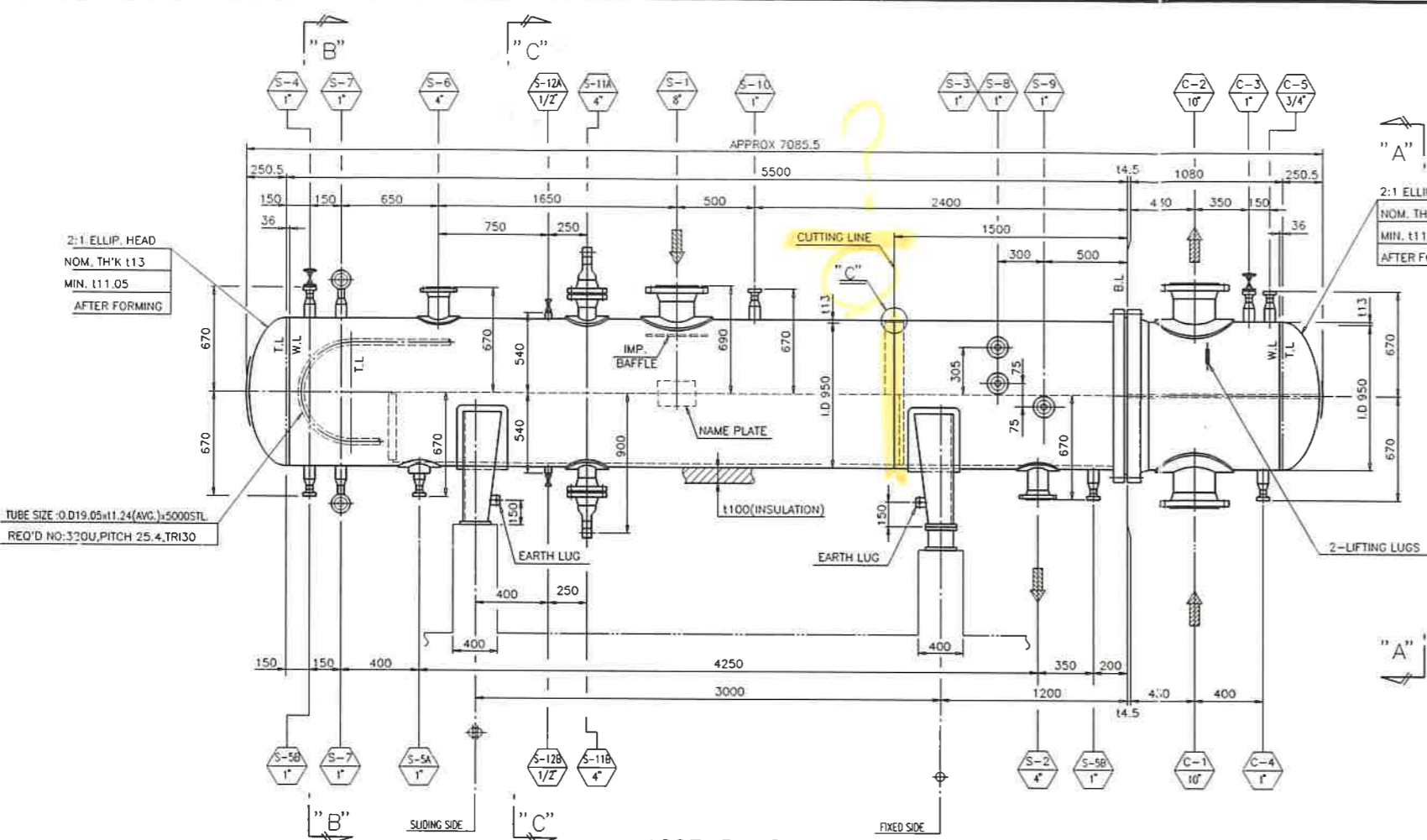
DETAIL "C"



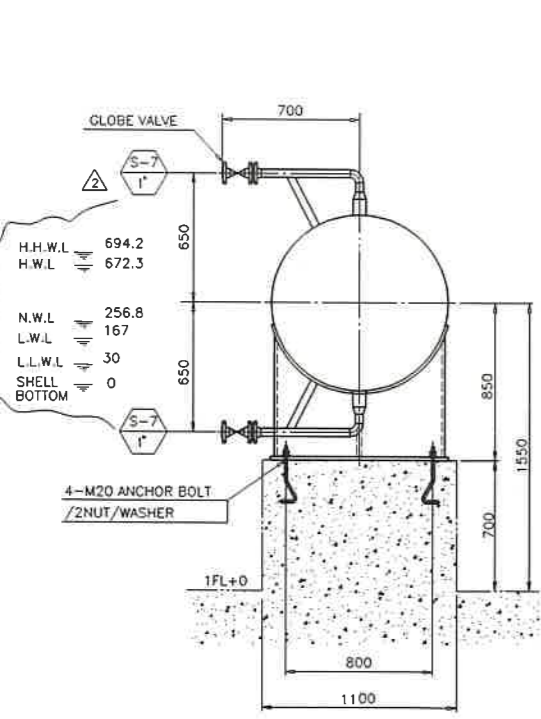
1) ANCHOR BOLT/2NUT/WASHER



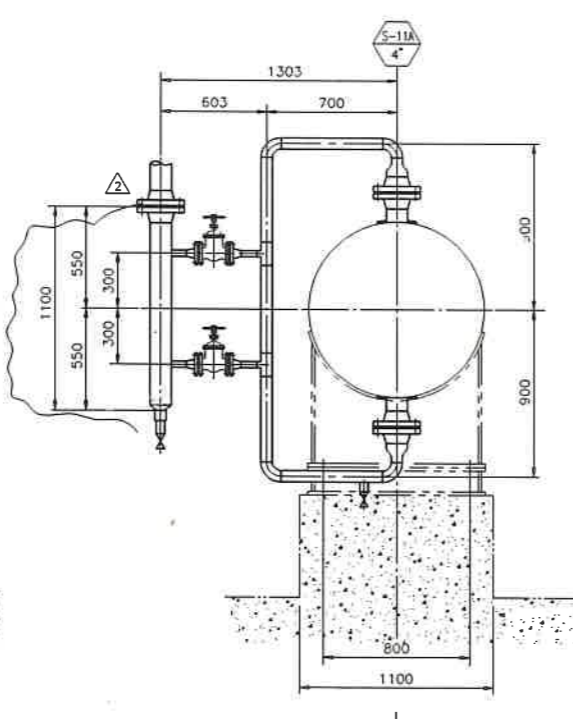
2) SETTING BOLT/2NUT/WASHER



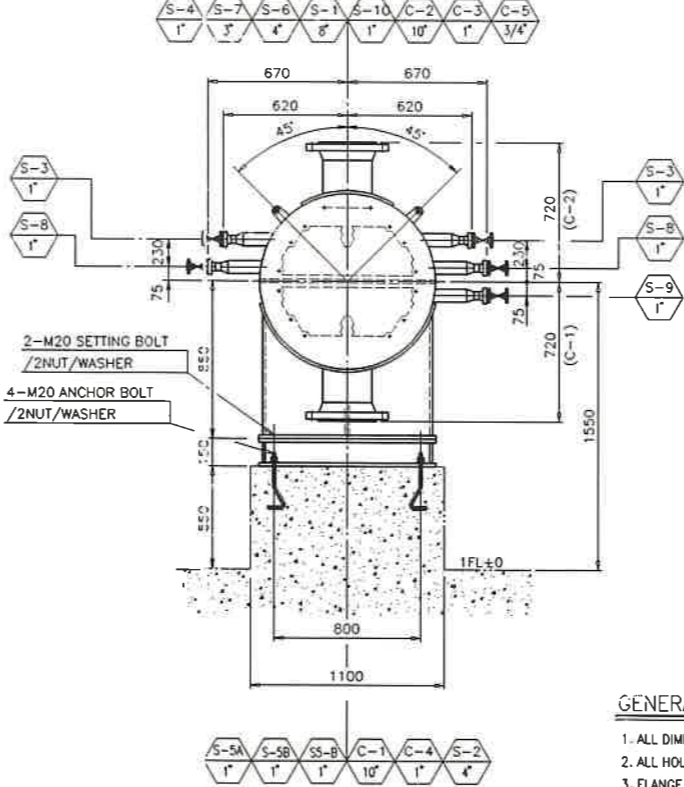
ASSEMBLY DWG.
S=1/20



SECTION "B" - "B"



SECTION "C" - "C"



VIEW "A" - "A"

NOZZLE CONNECTION

MARK	DESCRIPTION	SIZE	QTY	RATING	REMARKS
C-1	FEEDWATER INLET	10"	1	ANSI #300 WN.RF	
C-2	FEEDWATER OUTLET	10"	1	ANSI #300 WN.RF	
C-3	CHANNEL VENT	1"	1	ANSI #300 WN.RF	W/VALVE
C-4	CHANNEL DRAIN	1"	1	ANSI #300 WN.RF	
C-5	RELIEF VALVE	3/4"	1	ANSI #300 WN.RF	

S-1	STEAM INLET	8"	1	ANSI #300 WN.RF	
S-2	CONDENSATE OUTLET	4"	1	ANSI #300 WN.RF	
S-3	SHELL VENT	1"	2	ANSI #300 LWN.RF	W/VALVE
S-4	SHELL VENT	1"	1	ANSI #300 WN.RF	W/VALVE
S-5A/B	SHELL DRAIN	1"	3	ANSI #300 WN.RF	
S-6	RELIEF VALVE	4"	1	ANSI #300 WN.RF	
S-7	LEVEL GAUGE	1"	2	ANSI #300 WN.RF	W/VALVE
S-8	SHELL VENT	1"	2	ANSI #300 LWN.RF	W/VALVE
S-9	DRAIN COOLER VENT	1"	1	ANSI #300 WN.RF	W/VALVE
S-10	TEMPERATURE GAUGE	1"	1	ANSI #300 WN.RF	
S-11A/B	LS. CONN	4"	2	ANSI #300 WN.RF	
S-12A/B	LIT. CONN	1/2"	2	NPT 6000# CPLG.	W/VALVE

MATERIAL SPEC.

TUBE	A213-TP304	NOZZLE NECK	A106-B
TUBESHEET	A266-2 (W/SS304 DEPOSIT)	NOZZLE FLANGE	A105
SHELL	A516-70	COUPLING & PLUG	A105
SKIRT	A516-70	2nd TUBESHEET	SS F304
SHELL HEAD	A516-70	TIE ROD	SS400
CHANNEL	A516-70	SPACER	SGP
CHANNEL FLANGE	A266-2	IMP. BAFFLE	SS304
PASS PART PL.	A516-70	SHROUD	SS400
SUPPORT PLATE	SS304	SADDLE	SS400
BAFFLE	SS304		

DESIGN DATA

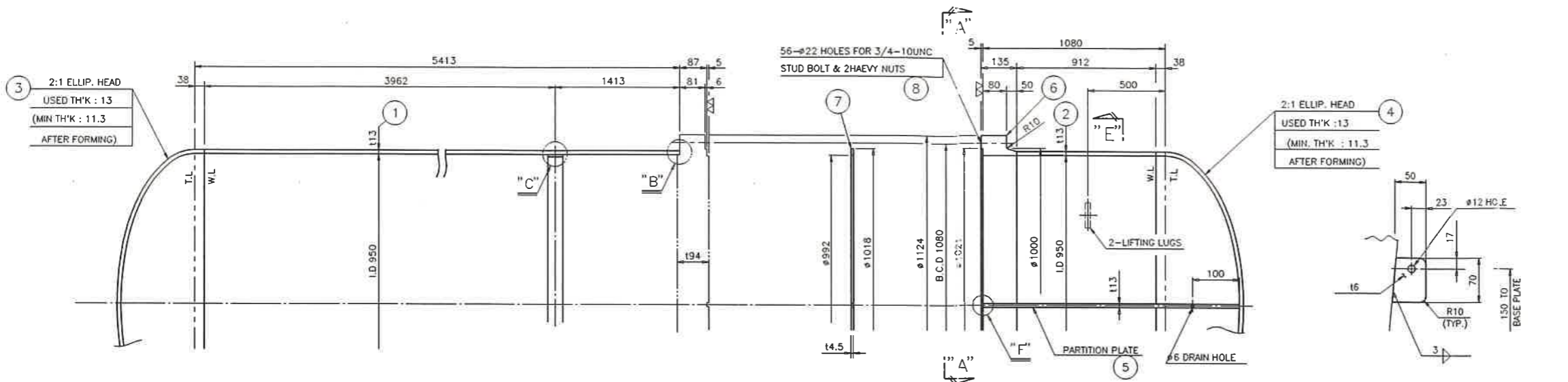
CODE :		ASME SEC. VIII DIV. 1 TEMA "C" & HEI	
SURFACE AREA		178 M ²	
FLUID NAME	STEAM	FEEDWATER	
OPER. PRESSURE	16 Kg/Cm ² A	9 Kg/Cm ² A	
INLET TEMPERATURE	200(200 SAT.) °C	85 °C	
OUTLET TEMPERATURE	90.216 °C	120.149 °C	
DESIGN PRESSURE	20 Kg/Cm ² G	20 Kg/Cm ² G	
DESIGN TEMPERATURE(SHELL/SKIRT)	220/220 °C	220 °C	
HYDROSTATIC TEST PRESSURE	30 Kg/Cm ² G	30 Kg/Cm ² G	
FOULING FACTOR	0.0001 m ² h/Kcal	0.0002 m ² h/Kcal	
RADIOGRAPHED TEST	YES	YES	
JOINT EFFICIENCY	95 %	95 %	
TUBE TO TUBESHEET JOINT	WELDING + EXPANDING		
CORROSION ALLOWANCE	3.2 MM	3.2 MM	
NO. OF PASS	TWO ZONE	2	
LOCAL REGULATION	EUA (에너지 이용 합리화법)		
WEIGHT	EMPTY : 6120 Kg	BUNDLE : 3500 Kg	
	OPERATING : 7920 Kg	FULL WATER : 11320 Kg	

GENERAL NOTES :

- ALL DIMENSIONS ARE IN MILLIMETERS UNLESS OTHERWISE STATED.
- ALL HOLES FOR FLANGE AND PADS TO STRADDLE VESSEL CENTER LINE.
- FLANGE FACE FINISH OF THE GASKET CONTACT SURFACE.
- INSULATION MATERIAL
 - INSULATION : SILICA (DENSITY 170 Kg/m³), THICKNESS 90mm
 - LAGGING : HOT DIP GALVANIZED SHEET, THICKNESS 0.7mm

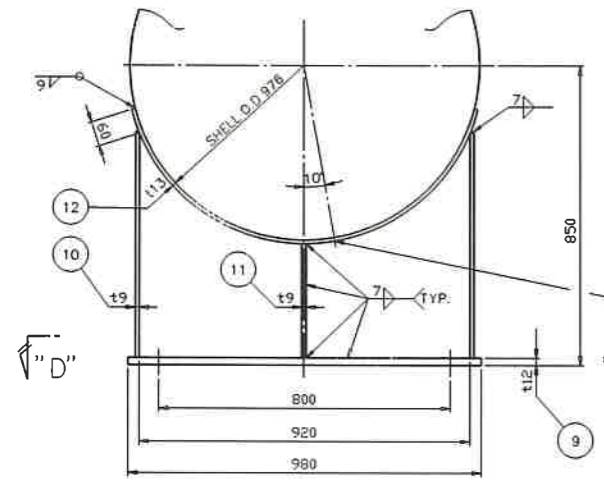
THIS DRAWING IS THE PROPERTY OF KOREA HEAT EXCHANGER IND. CO., LTD. (KHE).
 IT CONTAINS INFORMATION REGARDING AS CONFIDENTIAL BY THE COMPANY.
 IT IS TO BE KEPT SECRET AND NOT TO BE DISCLOSED TO OTHERS WITHOUT WRITTEN PERMISSION OF THE COMPANY.
 THIS DRAWING IS NOT TO BE REPRODUCED OR COPIED WITHOUT PERMISSION AND IS TO BE RETURNED TO THE COMPANY (PARTIAL OR COMPLETE) ON DEMAND.

CLIENT	대한주택공사			
PURCHASER	현대건설주식회사			
VEH/DOR	KHE KOREA HEAT EXCHANGER IND. CO., LTD.			
PROJECT	군포쓰레기소각시설건설회사			
ITEM NO.	H-701			
SERVICE	HOT WATER EXCHANGER			
TITLE	ASSEMBLY DWG.			
DWG. NO.	KP9812-D008	DRAWN BY	DEC. 5, '98	Y.K.HAN
P.O. NO.	R-HDC-811H093	CHECKED BY		
JOB NO.		REVIEWED BY	DEC. 23, '98	C.M.JI
REQ. NO.		APPROVED BY	DEC. 23, '98	C.H.LEE

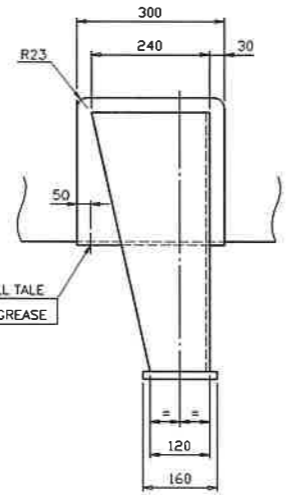


PART NO.	PART NAME	MATERIAL	WORK QTY	SPARE BUNDLE	WEIGHT (kg)	REMARKS
1	SHELL	A516-70	1		t13	
2	CHANNEL	A516-70	1		t13	
3	SHELL HEAD	A516-70	1		t13	
4	CHANNEL HEAD	A516-70	1		t13	
5	PARTITION PLATE	A516-70	1		t13	
6	FLANGE	A266-2	1		t135	
7	GASKET	SEE NOTE "I"	1	1	t4.5	
8	STUD BOLT/2H NUT	A193-B7/A194-2H	56	12		3/4-10UNCxL210
9	BASE PLATE	SS400	2		t12	
10	WEB PLATE	SS400	2		t9	
11	RIB PLATE	SS400	2		t9	
12	REINF. PAD	A516-70	2		t13	
13	BASE PLATE	SS400	2		t12	
14	WEB PLATE	SS400	1		t9	
15	RIB PLATE	SS400	1		t9	
16	BACK-UP RING	SS400	1		t6	
17	JACK BOLT	SUS304	2		M22xL90	
18	LIFTING LUG	A516-70	2		t16	
19	SLIDING PLATE	SS400	1		t6	
20	ERATH LUG	SS304	1		t6	

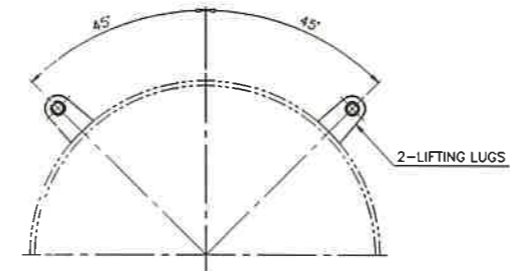
NOTE
 I. GASKET MAT'L
 HOOP : 304S.S
 FILLER : GRAPHITE
 TYPE : SPIRAL WOUND



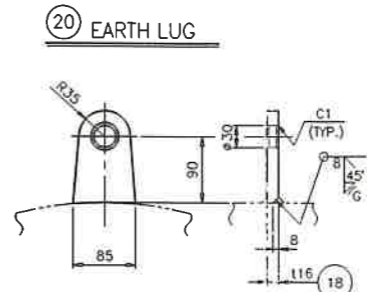
SADDLE DETAIL



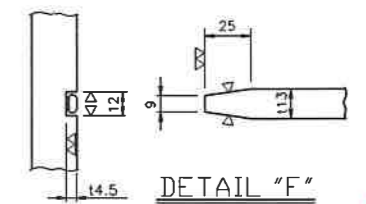
DETAIL "B"



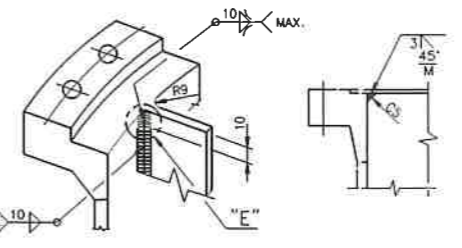
SECTION "E"



LIFTING LUG DETAIL

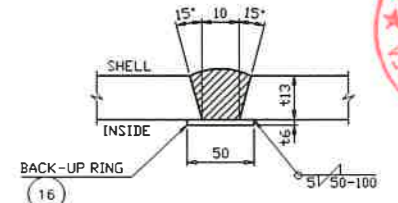


DETAIL "F"

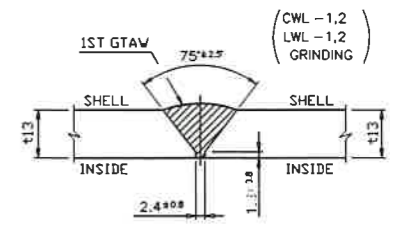


DETAIL "D"

DETAIL "E"

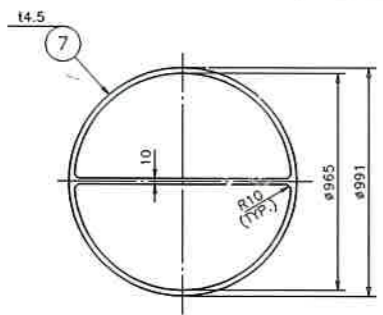


DETAIL "C"

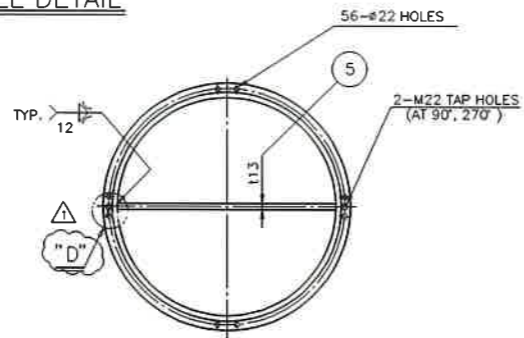


WELD SEAM DETAIL

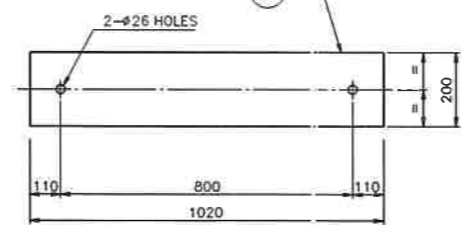
CWL-1,2,5,6
LWL-1~4



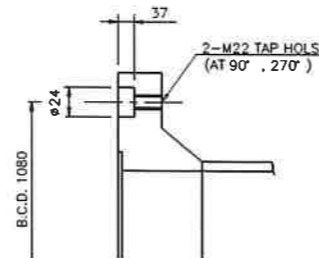
GASKET



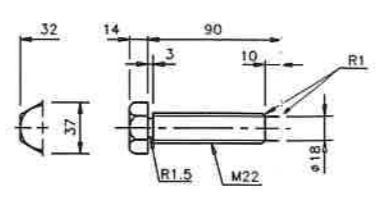
VIEW "A"-A"



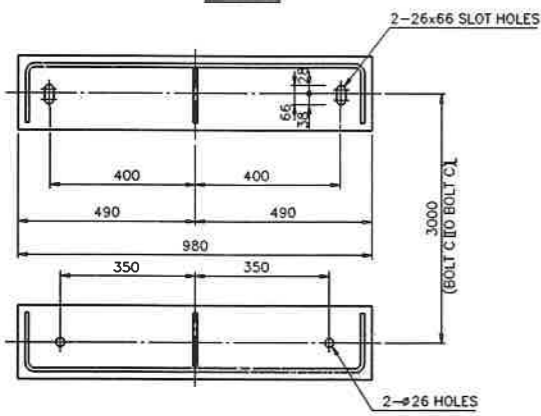
SLIDING PLATE



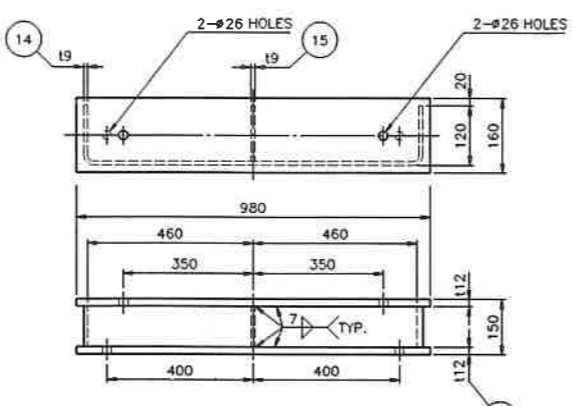
JACK BOLT HOLE



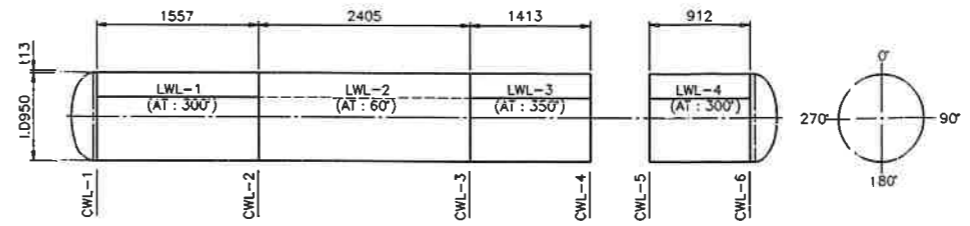
JACK BOLT



SECTION "D"-D"



SUPPORT DETAIL



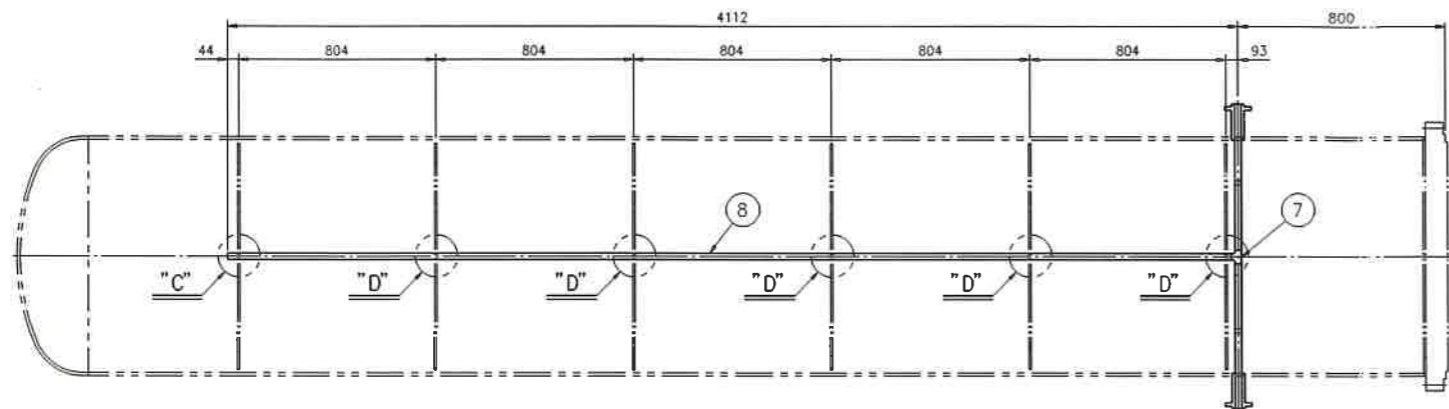
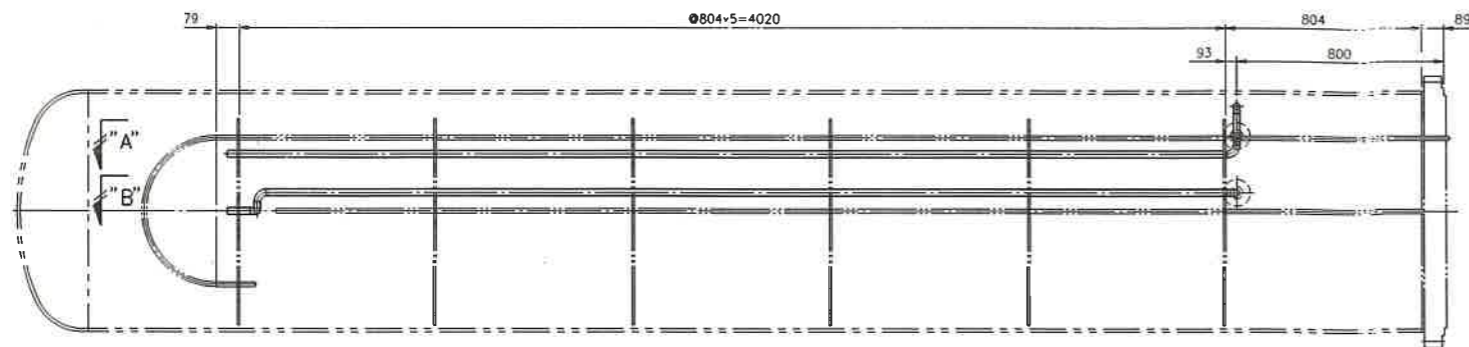
SEAM PLAN

FINAL

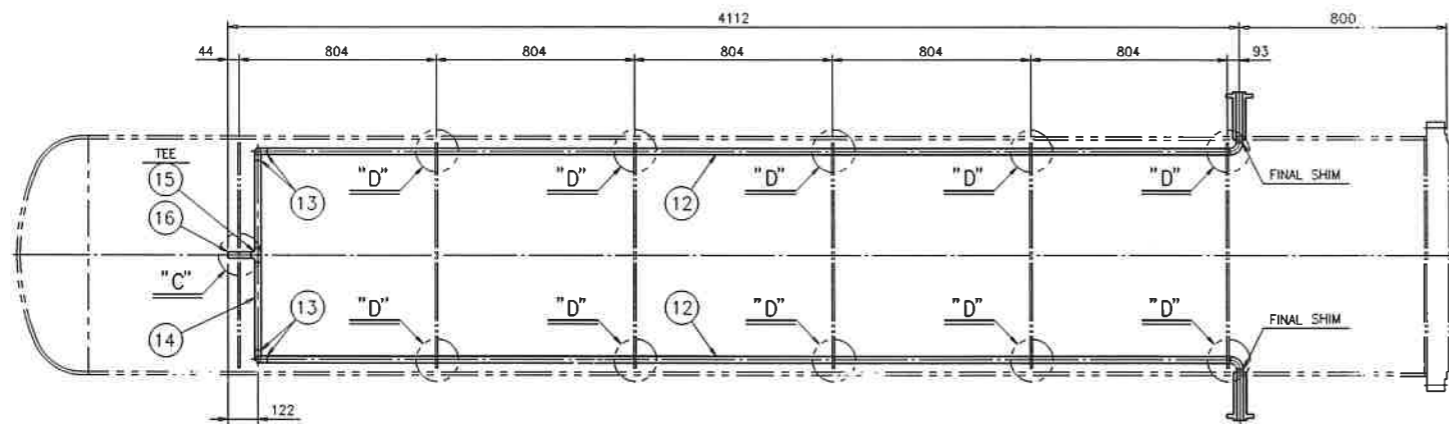
REV. MK	DATE	DESCRIPTION	DRWN	CHKD	REVD	APPD

CLIENT: **대한주목공사**
 PURCHASER: **현대건설주식회사**
 VENDOR: **KOREA HEAT EXCHANGER IND. CO., LTD.**
 PROJECT: **군포쓰레기소각시설건설회사**
 ITEM NO.: **H-701**
 SERVICE: **HOT WATER EXCHANGER**
 TITLE: **BODY & SADDLE DWG.** 1SET
 DWG. NO.: **KP9812-D009** DRAWN BY: **DEC.15 '98 Y.K.HAN** SCALE: **N/S**
 P.O. NO.: **R-H-811H093** CHECKED BY:
 JOB NO.: REVIEWED BY: **DEC.23, '98 C.M.JI** REV. MK:
 REQ. NO.: APPROVED BY: **DEC.23, '98 C.H.LEE**

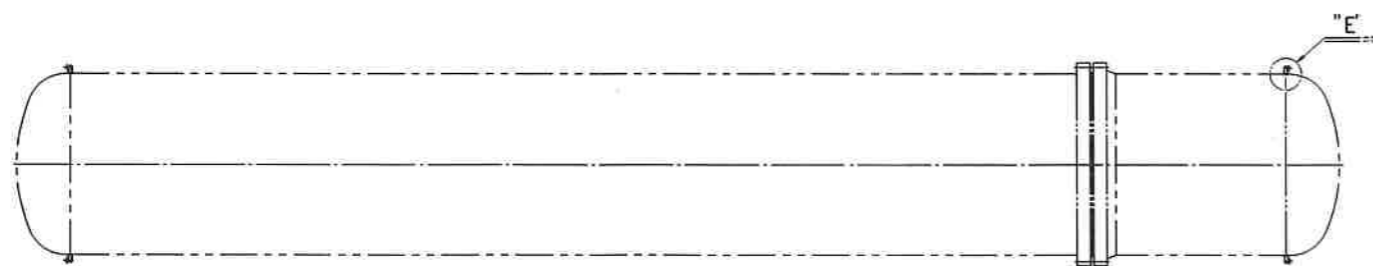
This drawing is the property of Korea Heat Exchanger Ind. Co., Ltd. (KHE).
 It is not to be reproduced, stored in a retrieval system, or transmitted in any form or by any means, electronic, mechanical, photocopying, recording, or by any information storage and retrieval system, without the prior written permission of KHE.
 THIS DRAWING AND THE INFORMATION THEREON IS NOT TO BE USED OR DISCLOSED TO OTHERS EXCEPT WITH WRITTEN PERMISSION FROM KHE.
 THIS DRAWING IS NOT TO BE REPRODUCED OR COPIED WITHOUT PERMISSION AND IS TO BE RETURNED TO KHE WITH ANY COPIES (PARTIAL OR COMPLETE) ON DEMAND.



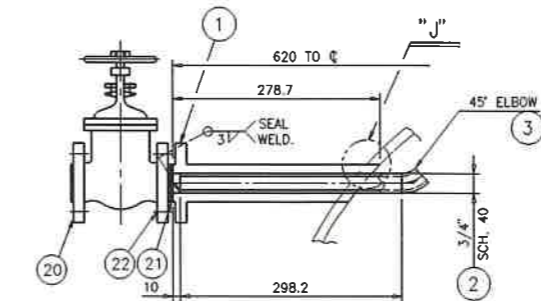
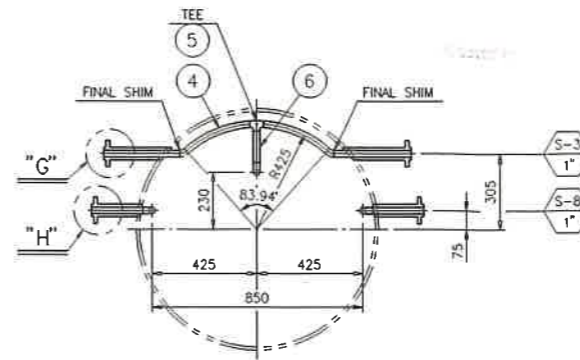
VIEW "A"



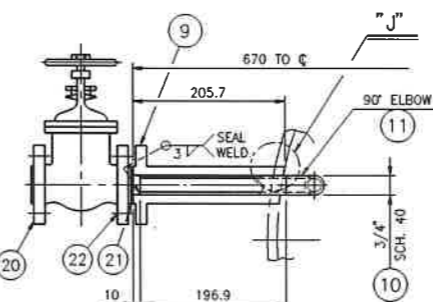
VIEW "B"



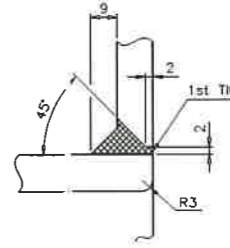
INSULATION SUPPORT RING DETAIL



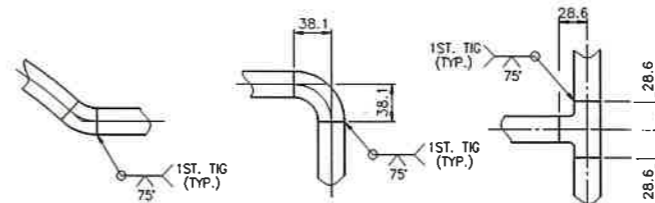
DETAIL "G"



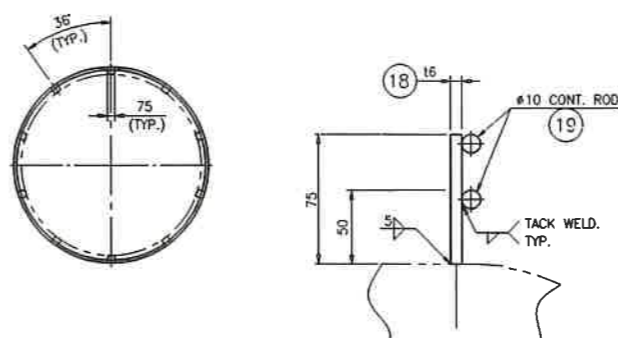
DETAIL "H"



DETAIL "J"



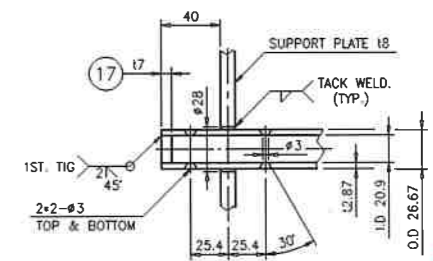
45° ELBOW WELD. 90° ELBOW WELD. TEE WELD.



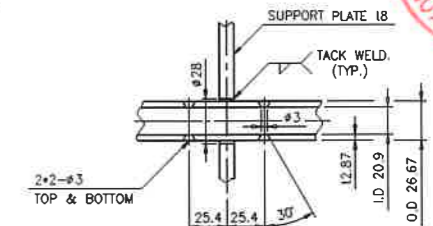
DETAIL "E"

PART NO.	PART NAME	MATERIAL	WORK QTY/BUNDLE	SPARE	WEIGHT (kg)	REMARKS
1	FLANGE	A105	2			1" ANSI 300J LWN RF.
2	NOZZLE NECK	S.S304	2			3/4" SCH.40
3	45(L.R) ELBOW	S.S304	2			3/4" SCH.40
4	PIPE	S.S304	2			3/4" SCH.40
5	TEE	S.S304	1			3/4" SCH.40
6	PIPE	S.S304	1			3/4" SCH.40
7	TEE	S.S304	1			3/4" SCH.40
8	PIPE	S.S304	1			3/4" SCH.40
9	FLANGE	A105	2			1" ANSI 300J LWN RF.
10	NOZZLE NECK	S.S304	2			3/4" SCH.40
11	90(L.R) ELBOW	S.S304	2			3/4" SCH.40
12	PIPE	S.S304	2			3/4" SCH.40
13	90(L.R) ELBOW	S.S304	4			3/4" SCH.40
14	PIPE	S.S304	2			3/4" SCH.40
15	TEE	S.S304	1			3/4" SCH.40
16	PIPE	S.S304	1			3/4" SCH.40
17	END PLATE	S.S304	2			t7
18	CLIP	A516-70	20			t6x75x75
19	CONT. ROD	SS400	4			φ10
20	GLOBE VALVE	A105	4			1" API #600 RF.
21	GASKET	SEE NOTE 1	4			t4.5
22	STUD B/2H.N	A193-B7	16 SETS			US/8=11UNC*90L

NOTE
1. GASKET MATERIAL
TYPE : SPIRAL WOUND
HOOP : FLEXIBLE GRAPHITE
INNER RING : SUS304
OUTER RING : C.S



DETAIL "C"

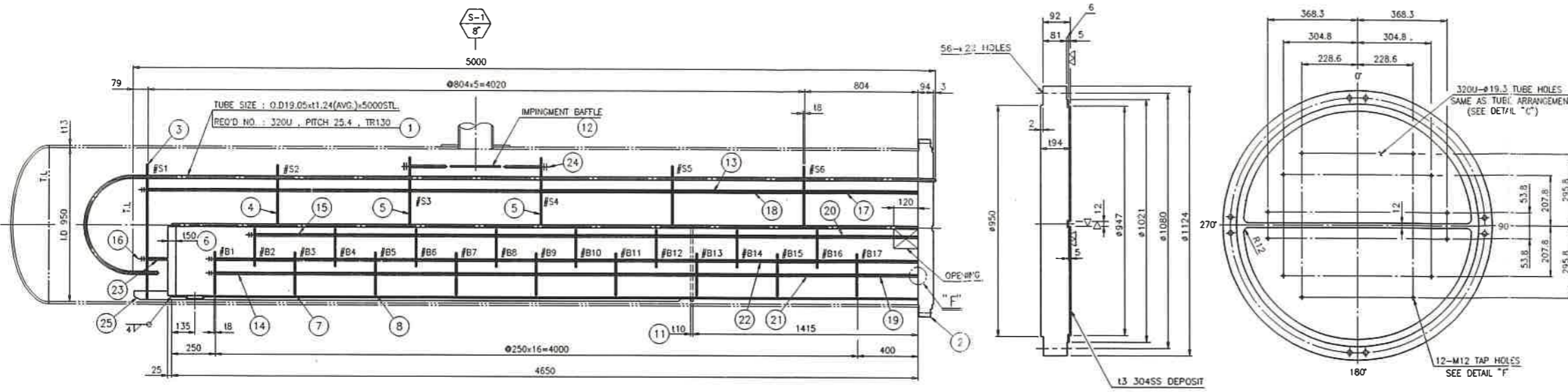


DETAIL "D"



FINAL						
REV. LK	DATE	DESCRIPTION	DRWN	CHKD	REVD	APPD
CLIENT: 대한주목공사						
PURCHASER: 현대건설주식회사						
VENDOR: KHE KOREA HEAT EXCHANGER IND. CO. LTD.						
PROJECT: 군포쓰레기소각시설건물공사						
ITEM NO.: H-701						
SERVICE: HOT WATER EXCHANGER						
TITLE: NOZZLE & INSU. SUPPORT RING DWG. 1SET						
DWG. NO.	KP9812-D010	DRAWN BY	DEC.15 '98	Y.K.HAN	SCALE	
P.O. NO.	R-H-811H093	CHECKED BY			N/S	
JOB NO.	REVIEWED BY		DEC.23 '98	C.M.JI	REV. MK	
REQ. NO.	APPROVED BY		DEC.23 '98	C.H.LEE	△	

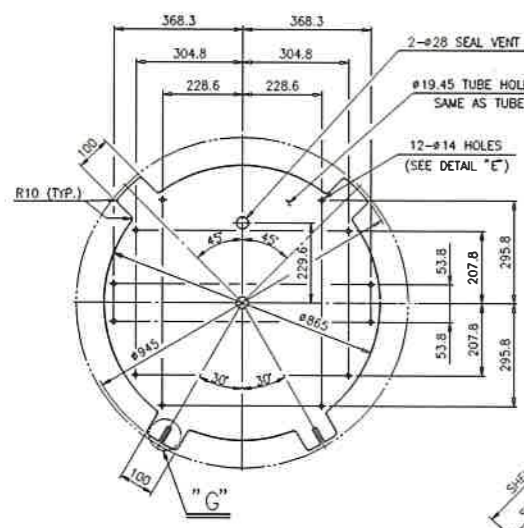
THIS DRAWING IS THE PROPERTY OF KOREA HEAT EXCHANGER IND. CO., LTD (KHE). IT CONTAINS INFORMATION RECORDED AS CONFIDENTIAL BY KHE. IT IS TO BE KEPT SECRET AND NOT TO BE DISCLOSED TO OTHERS EXCEPT WITH WRITTEN AUTHORIZATION FROM KHE. THIS DRAWING IS NOT TO BE REPRODUCED OR COPIED WITHOUT PERMISSION AND IS TO BE RETURNED TO KHE WITH ANY CORRECTIONS (PARTIAL OR COMPLETE) ON DEMAND.



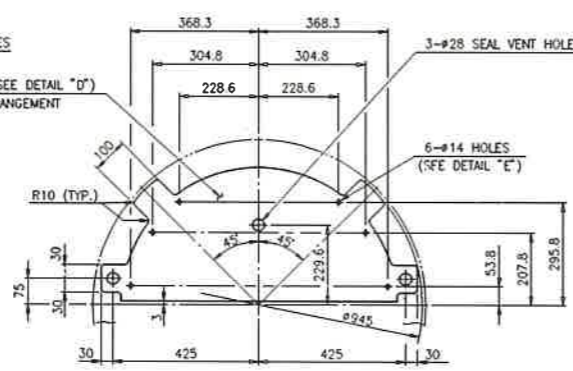
PART NO.	PART NAME	MATERIAL	WORK QTY/BUNDLE	SPARE QTY/BUNDLE	WEIGHT (kg)	REMARKS
1	TUBE	A213-TP304	320U			#19.05x11.24
2	TUBE SHEET	A213-TP304	1			194
3	SUPPORT PLATE	SS304	1			18
4	SUPPORT PLATE	SS304	3			18
5	SUPPORT PLATE	SS304	2			18
6	SECOND TUBE SHEET	SS304	1			150
7	BAFFLE	SS304	9			18
8	BAFFLE	SS304	8			18
9	TOP PLATE (D.C ZONE)	SS400	1			16
10	SHROUD	SS400	1			16
11	SEAL PLATE	SS400	1			110
12	IMPINGEMENT BAFFLE	SS304	1			16
13	TIE ROD W/DOUBLE NUT	SS400	6			M12 (#13)
14	TIE ROD W/DOUBLE NUT	SS400	4			M12 (#13)
15	TIE ROD W/DOUBLE NUT	SS400	2			M12 (#13)
16	TIE ROD W/DOUBLE NUT	SS400	6			M12 (#13)
17	SPACER	SGP	4			1/2"
18	SPACER	SGP	42			1/2"
19	SPACER	SGP	4			1/2"
20	SPACER	SGP	2			1/2"
21	SPACER	SGP	30			1/2"
22	SPACER	SGP	32			1/2"
23	SPACER	SGP	6			1/2"
24	TIE ROD W/DOUBLE NUT	SS400	2			M12 (#13)
25	SEALING STRIP	SS400	2			112

TUBE BUNDLE ASSEMBLY

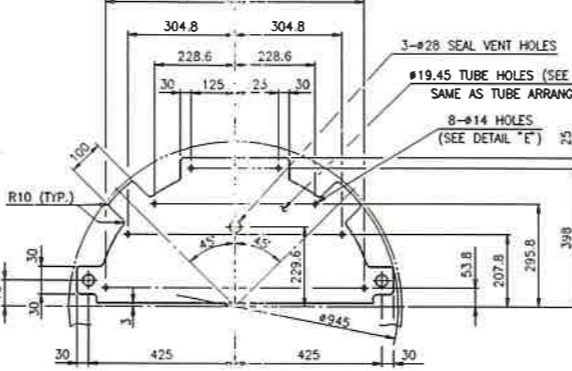
TUBE SHEET ②



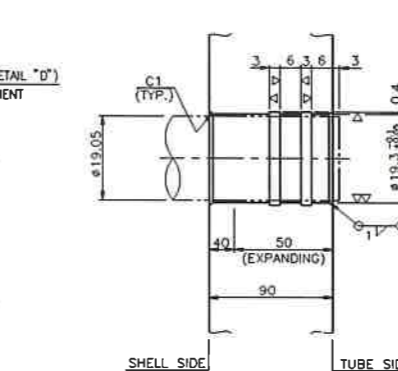
SUPPORT PLATE ③ (#51)



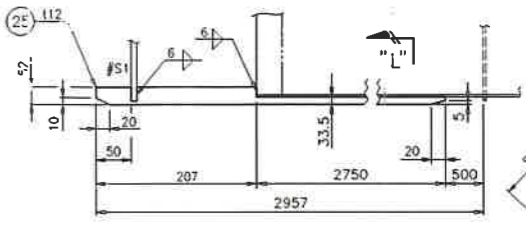
SUPPORT PLATE ④ (#52, #55, #56)



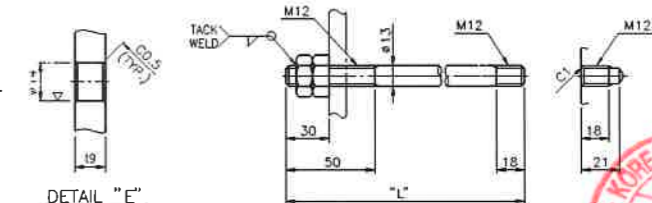
SUPPORT PLATE ⑤ (#3, #54)



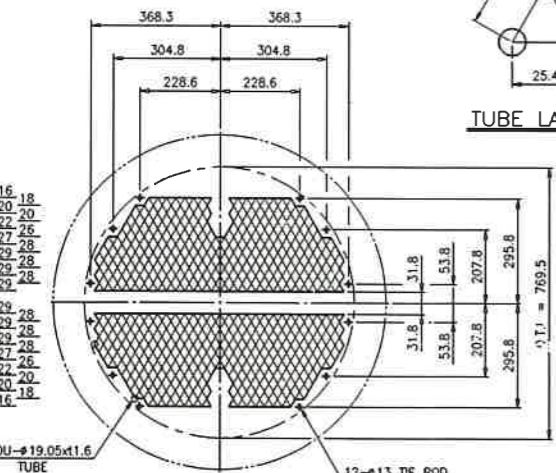
DETAIL "C"



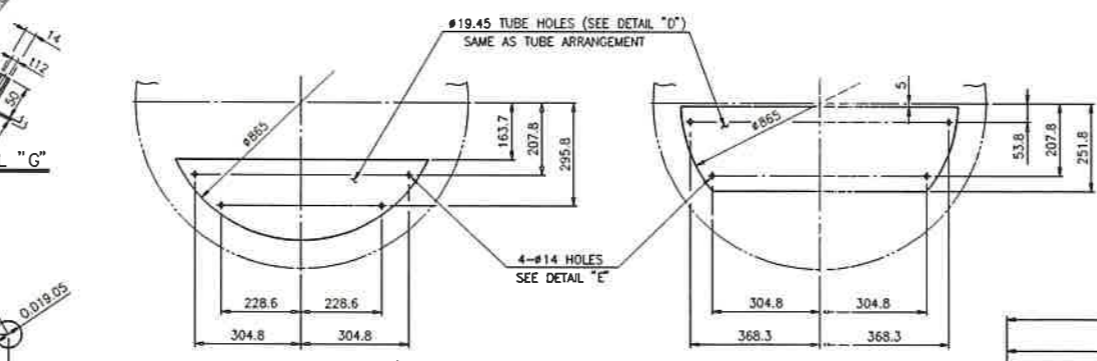
SEALING STRIP DETAIL



TIE ROD (SEE TABLE #2)

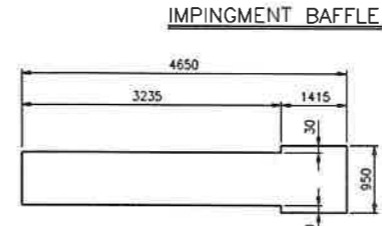


TUBE ARRANGEMENT

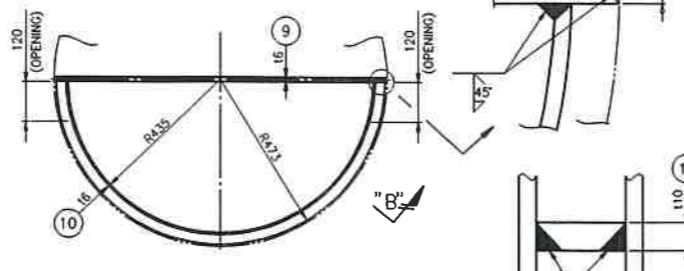


BAFFLE ⑦ (#B1 ~ #B17 ODD NO.)

BAFFLE ⑧ (#B2 ~ #B6 EVEN NO.)



IMPINGEMENT BAFFLE



SECTION "A"

SECTION "B"



① U-TUBE DIMENSION (SEE TABLE #1)

TABLE #2

PART NO.	"L"	Q'TY
(13)	4880	6
(14)	4456	4
(18)	4206	2

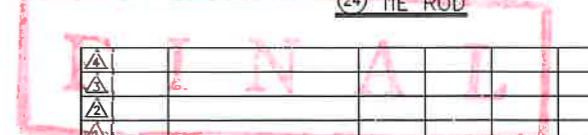
TABLE #3

PART NO.	"L"	Q'TY
(17)	804	4
(18)	796	42
(19)	400	4
(20)	650	2
(21)	492	30
(22)	242	32
(23)	149	6

TABLE #1

PART NO.	"R"	U'LL LENG H	Q'TY
(1-1)	31.8	10099.9	29
(1-2)	53.8	10169.0	28
(1-3)	75.79	10238.1	29
(1-4)	97.79	10307.2	28
(1-5)	119.79	10376.3	29
(1-6)	141.79	10445.4	28
(1-7)	163.78	10514.5	27
(1-8)	185.78	10583.6	26
(1-9)	207.78	10652.7	25
(1-10)	229.77	10721.9	20
(1-11)	251.77	10791.0	20
(1-12)	273.77	10860.1	18
(1-13)	295.76	10929.2	16

SPACER (SEE TABLE #3)



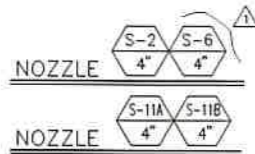
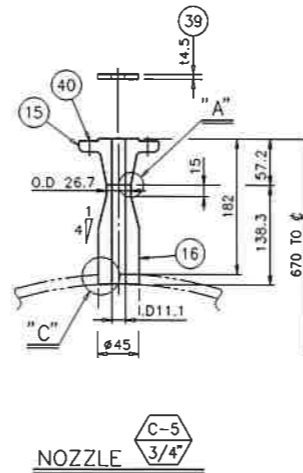
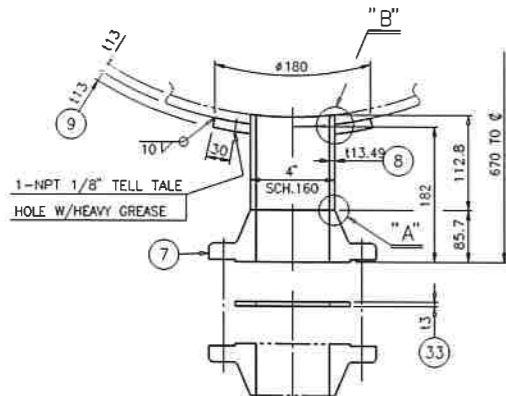
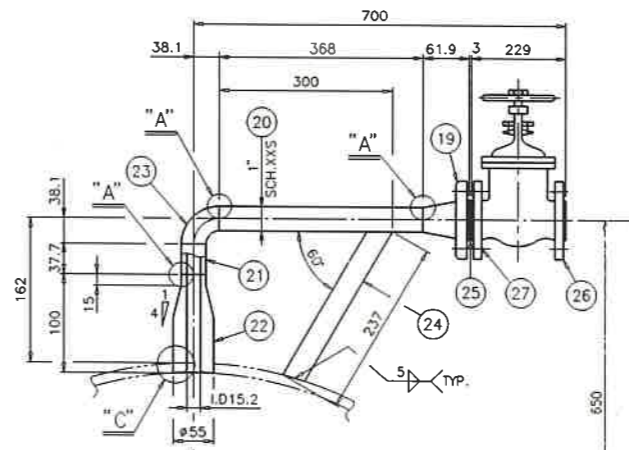
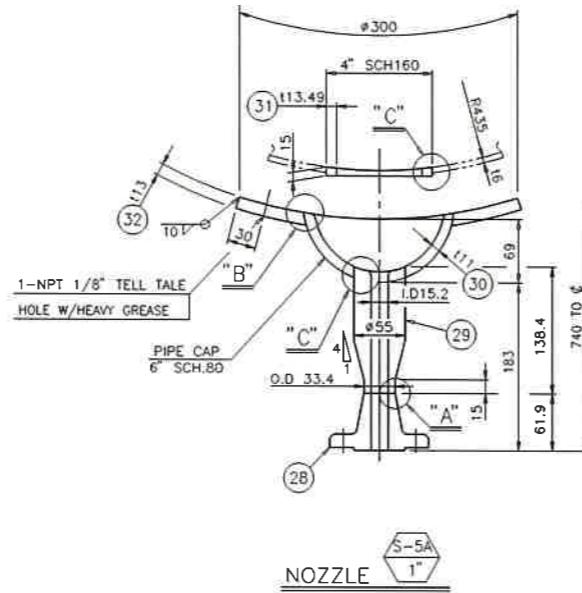
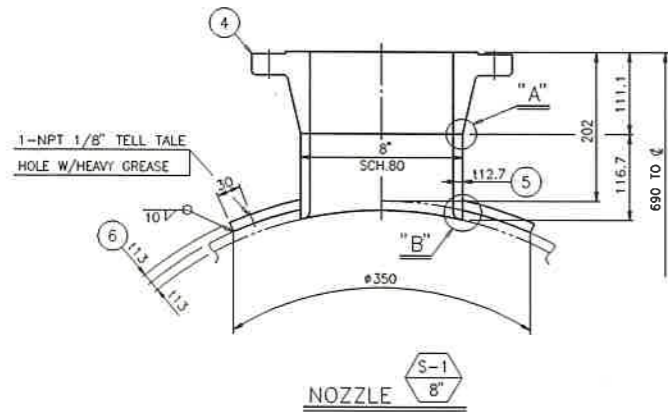
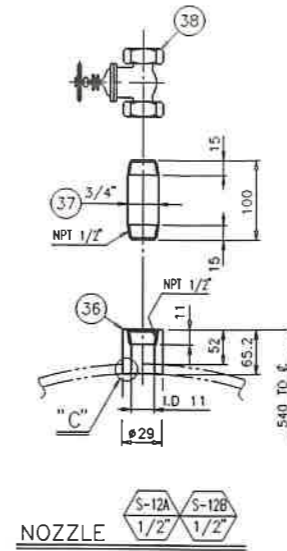
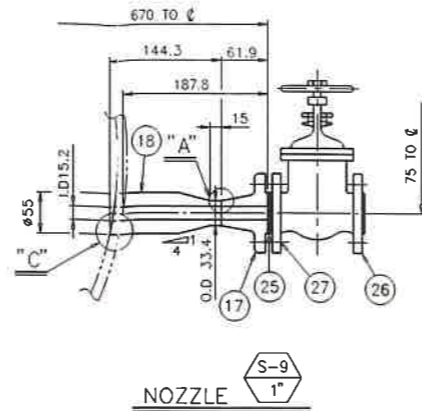
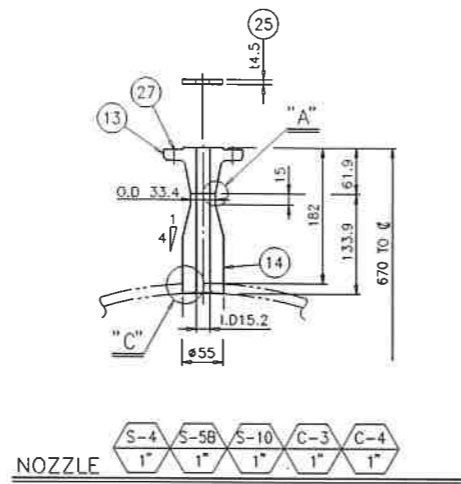
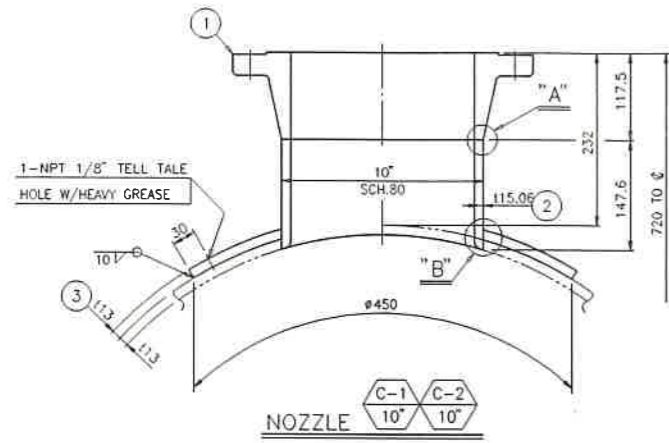
DETAIL "D"

REV	DATE	DESCRIPTION	DRWN	CHKD	REVD	APPD

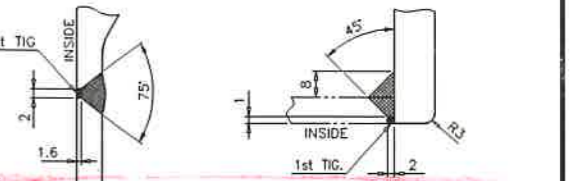
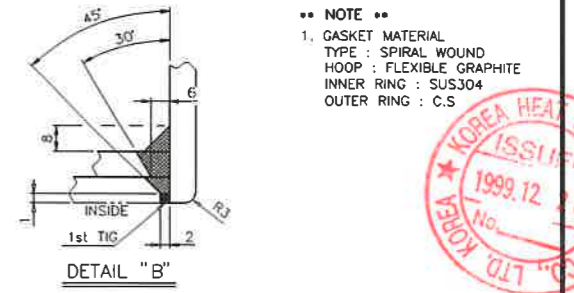
CLIENT: 대한주변공사
PURCHASER: 현대건설주식회사
VENDOR: KOREA HEAT EXCHANGER IND. CO., LTD.
PROJECT: 군포스래기소각시설건설회사
ITEM NO.: H-701
SERVICE: HOT WATER EXCHANGER
TITLE: BUNDEL & BAFFLE DETAIL DWG. 1/SET
DWG. NO.: KP9812-D011
P.O. NO.: R-HDC-811H093
JOB NO.:
REQ. NO.:

THIS DRAWING IS THE PROPERTY OF KOREA HEAT EXCHANGER IND. CO., LTD. (KHE). THIS DRAWING AND THE INFORMATION THEREON IS NOT TO BE USED OR DISCLOSED TO OTHERS EXCEPT WITH WRITTEN AND AUTHORIZED PERMISSION FROM KHE. THIS DRAWING IS NOT TO BE REPRODUCED OR COPIED WITHOUT PERMISSION AND IS TO BE RETURNED TO KHE, WITH ANY COPIES (PARTIAL OR COMPLETE) ON DEMAND.





PART NO.	PART NAME	MATERIAL	WORK Q'TY	SPARE BUNDLE	WEIGHT (kg)	REMARKS
1	FLANGE	A105	2			10" ANSI 300/ WN. RF
2	NOZZLE NECK	A106-B	2			10" SCH.80
3	REINF. PAD	A516-70	2			t13
4	FLANGE	A105	1			8" ANSI 300/ WN. RF
5	NOZZLE NECK	A106-B	1			8" SCH.80
6	REINF. PAD	A516-70	1			t13
7	FLANGE	A105	3			4" ANSI 300/ WN. RF
8	NOZZLE NECK	A106-B	3			4" SCH.160
9	REINF. PAD	A516-70	3			t13
-	BANK -					
12	REINF. PAD	A516-70	1			t13
13	FLANGE	A105	6			1" ANSI 300/ WN. RF
14	BOSS	A105	6			#55
15	FLANGE	A105	1			3/4" ANSI 300/ WN. RF
16	BOSS	A105	1			#45
17	FLANGE	A105	3			1" ANSI 300/ WN. RF
18	BOSS	A105	1			#55
19	FLANGE	A105	2			1" ANSI 300/ WN. RF
20	NOZZLE NECK	A106-B	2			1" SCH.XXS
21	PIPE	A106-B	2			1" SCH.XXS
22	BOSS	A105	2			#55
23	90° ELBOW (L.R)	A234-WPB	2			1" SCH.XXS
24	RIB	A516-70	2			F.B 60x6
25	GASKET	SEE NOTE 1	5	5		14.5
26	GLOBE VALVE	A105	4			1" API #600 RF.
27	STUD B/2H.N	A193-B7 A194-2H	ROSETS 8			5/8-11UNCxL90
28	FLANGE	A105	1			1" ANSI 300/ WN. RF
29	BOSS	A105	1			#55
30	PIPE CAP	A234-WPB	1			6" SCH.80
31	PIPE	A106-B	1			4" SCH.160
32	REINF. PAD	A516-70	1			t13
33	GASKET	SEE NOTE 1	3	3		14.5
34	STUD B/2H.N	A193-B7 A194-2H	12SETS 6			3/4-10UNCxL120
-	BANK -					
36	COUPLING	A105	2			#29(1/2" 6000#)
37	PIPE	A106-B	2			1/2" SCH.160
38	GLOBE VALVE	A105	2			1/2"(NPT 1/2")API #600
39	GASKET	SEE NOTE 1	1	1		14.5
40	STUD B/2H.N	A193-B7 A194-2H	4	2		5/8-11UNCxL80



NOTE
1. GASKET MATERIAL TYPE : SPIRAL WOUND HOOP : FLEXIBLE GRAPHITE INNER RING : SUS304 OUTER RING : C.S

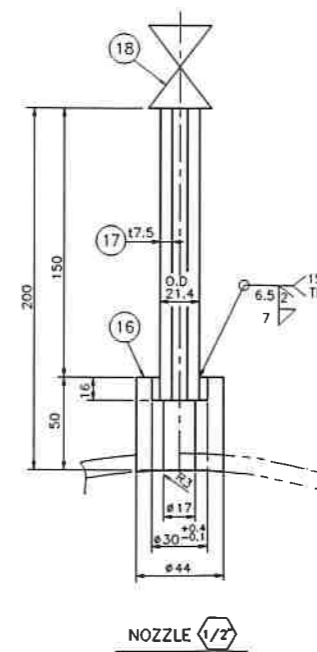
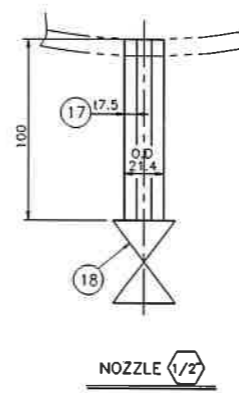
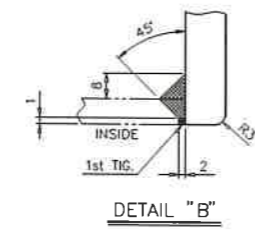
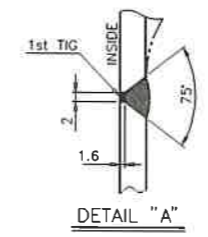
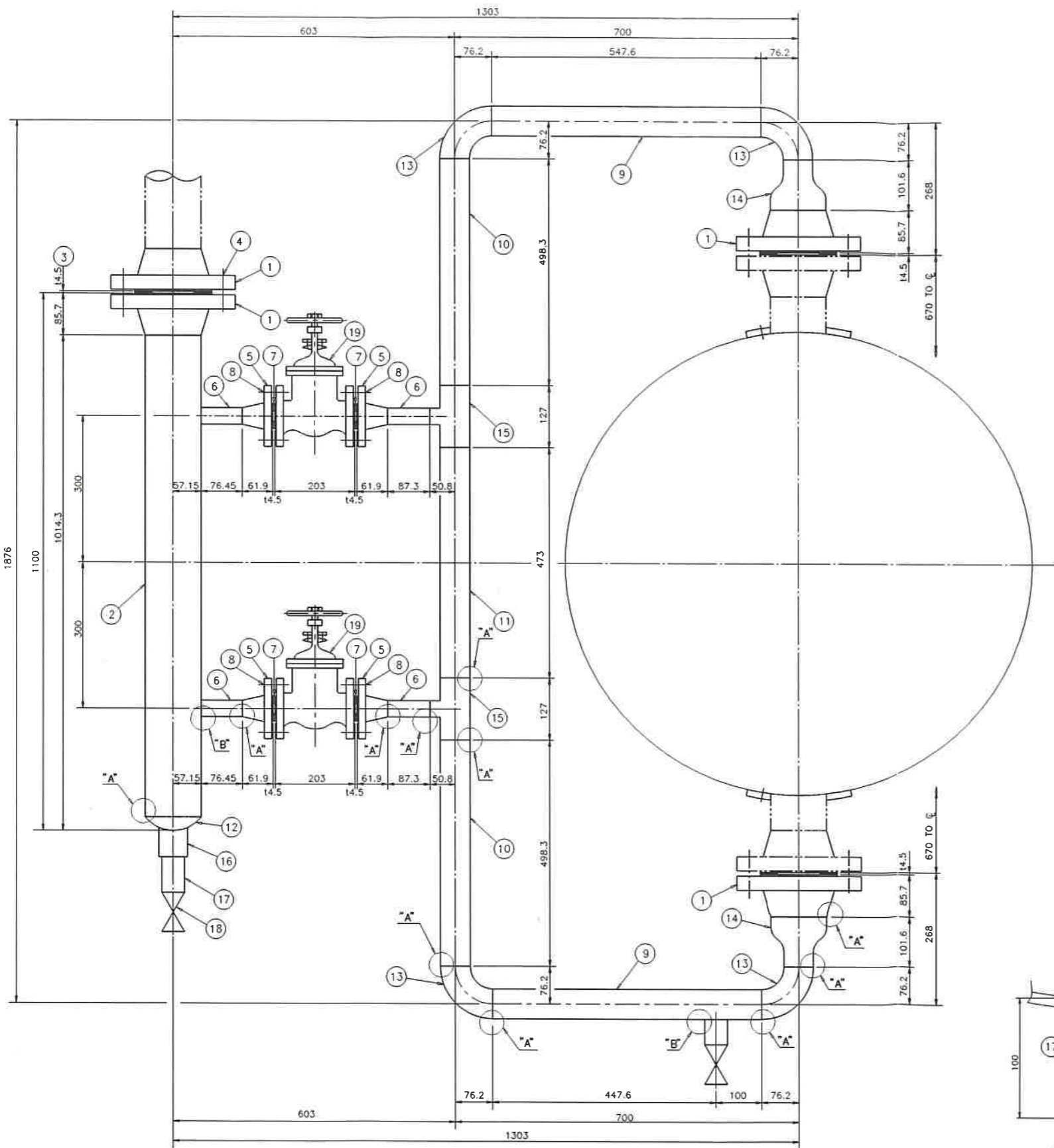


REV. NO.	DATE	DESCRIPTION	DRWN	CHKD	REVD	APPD
1	DEC.22.98	BY OWNER COMMENTS	G.S.LEE		C.M.JI	C.H.LEE

CLIENT: 대한주택공사
PURCHASER: 현대건설주식회사
VENDOR: KOREA HEAT EXCHANGER IND. CO., LTD.
PROJECT: 군포쓰레기소각시설건설회사
ITEM NO.: H-701
SERVICE: HOT WATER EXCHANGER
TITLE: NOZZLE DETAIL DWG. 1SET
DWG. NO.: KP9812-0012 DRAWN BY: DEC.15.98 Y.K.HAN SCALE:
P.O. NO.: R-HDC-811H093 CHECKED BY: NONE
JOB NO.: REVIEWED BY: DEC.23.98 C.M.JI REV. MK:
REQ. NO.: APPROVED BY: DEC.23.98 C.H.LEE

THIS DRAWING IS THE PROPERTY OF KOREA HEAT EXCHANGER IND. CO., LTD. (KHE) IF CONTAINS INFORMATION REQUIRED AS CONFIDENTIAL BY THE CLIENT, IT IS TO BE KEPT SECRET AND NOT TO BE REPRODUCED OR COPIED WITHOUT PERMISSION AND IT IS TO BE RETURNED TO THE CLIENT UPON COMPLETION OF THE PROJECT. THIS DRAWING IS NOT TO BE REPRODUCED OR COPIED WITHOUT PERMISSION AND IT IS TO BE RETURNED TO THE CLIENT UPON COMPLETION OF THE PROJECT.

PART NO.	PART NAME	MATERIAL	WORK Q'TY/BUNDLE	SPARE	WEIGHT (kg)	REMARKS
1	FLANGE	A105	4			4" ANSI 300# WN. RF.
2	CHAMBER	A106-B	1			4" SCH.160
3	GASKET	SEE NOTE1	1	1		14.5
4	STUD B/2H.N	A193-B7 A194-2H	8 SETS	2		3/4-10UNCxL120
5	FLANGE	A105	4			1" ANSI 300# WN. RF.
6	NOZZLE NECK	A106-B	4			1" SCH.XXS
7	GASKET	SEE NOTE1	4	4		14.5
8	STUD B/2H.N	A193-B7 A194-2H	16 SETS	4		5/8-11UNCxL90
9	PIPE	A106-B	2			2" SCH.160
10	PIPE	A106-B	2			2" SCH.160
11	PIPE	A106-B	1			2" SCH.160
12	PIPE CAP	A234-WPB	1			4" SCH.160
13	90° ELBOW (L.R)	A234-WPB	4			2" SCH.160
14	CONCENTRIC REDUCER	A234-WPB	2			4" x 2" SCH.160
15	REDUCING TEE	A234-WPB	2			2" x 1" SCH.160
16	COUPLING	A105	1			ø44
17	PIPE	A106-B	2			1/2" x SCH.XX-S
18	GLOBE VALVE	A105	2			1/2" S.W API 800
19	GLOBE VALVE	A105	2			1" ANSI 300# RF.



FINAL

.. NOTE ..
 1. GASKET MATERIAL
 TYPE : SPIRAL WOUND INNER RING : SUS304
 HOOP : FLEXIBLE GRAPHITE OUTER RING : C.S

REV. MK.	DATE	DESCRIPTION	DRWN	CHKD	REVD	APPD
CLIENT						
대한주택공사						
PURCHASER						
현대건설주식회사						
VENDOR						
KHE KOREA HEAT EXCHANGER IND. CO., LTD.						
PROJECT						
군포쓰레기소각시설건설회사						
ITEM NO.						
H-701						
SERVICE						
HOT WATER EXCHANGER						
TITLE						1SET
NOZZLE DETAIL DWG.(2/2)						
DWG. NO.	KP9812-0013	DRAWN BY	DEC.14.'99	Y.K.HAN	SCALE	
P.O. NO.	R-HDC-811H093	CHECKED BY			NONE	
JOB NO.		REVIEWED BY	DEC.14.'99	C.M.JI	REV. MK.	
REQ.NO.		APPROVED BY	DEC.14.'99	C.H.LEE		

THIS DRAWING IS THE PROPERTY OF KOREA HEAT EXCHANGER IND. CO., LTD.(KHE). IT CONTAINS INFORMATION REGARDING AS CONFIDENTIAL BY THE COMPANY. IT IS REQUESTED TO RETURN TO THE COMPANY IMMEDIATELY UPON RECEIPT. THIS DRAWING IS NOT TO BE REPRODUCED OR COPIED WITHOUT PERMISSION AND IS TO BE RETURNED TO THE COMPANY UPON DEMAND.